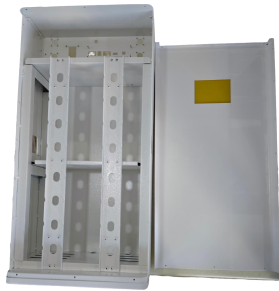


AWT 51.2v 280ah/314ah
Vertical Home Solar Energy Storage
DIY Box Assembly Instructions



Equipment Accessories



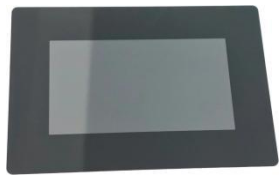
① Metal Box



② PCB Board



③ JK-PB2A16S20P BMS V19



④ 4.3inch LCD Screen



⑤ EVA Foam



⑥ Epoxy Board



⑦ Flexible Busbar



⑧ 250A Circuit Breaker



⑨ Terminals

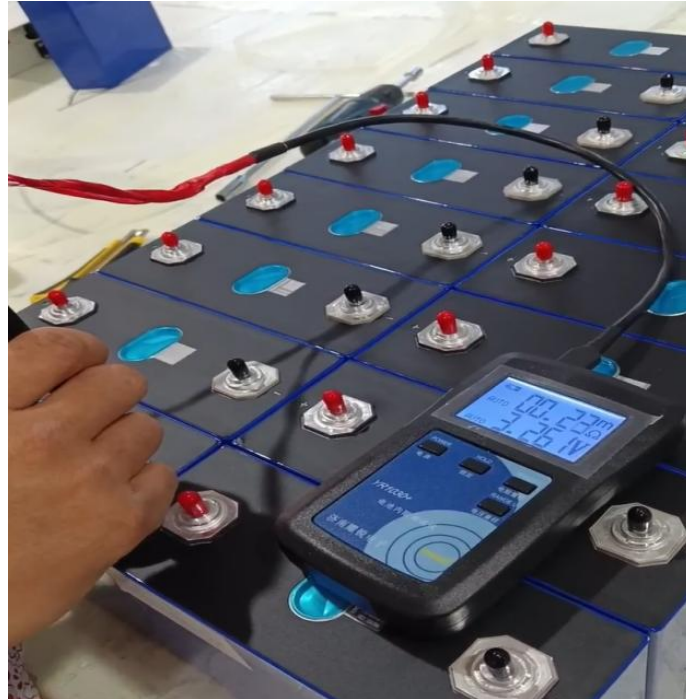


⑩ Side Handle



⑪ Foma Wheel

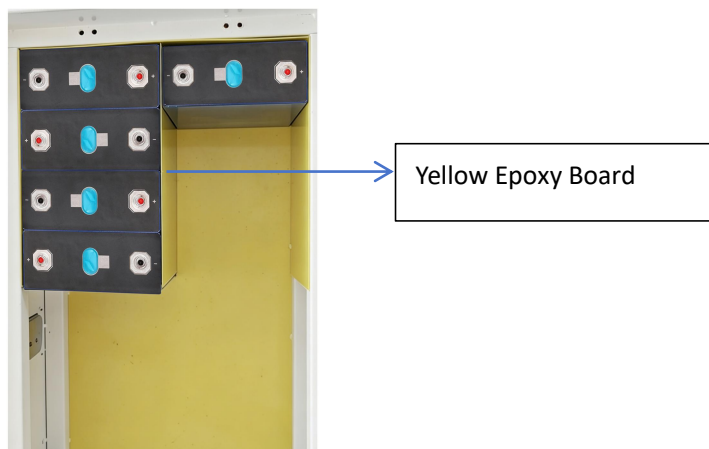
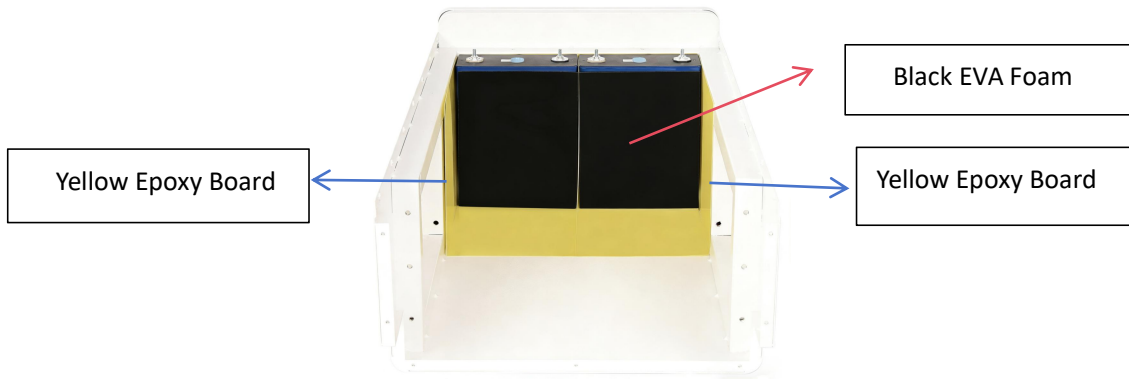
1. Please measure the voltage of each battery before assembly to ensure voltage consistency.



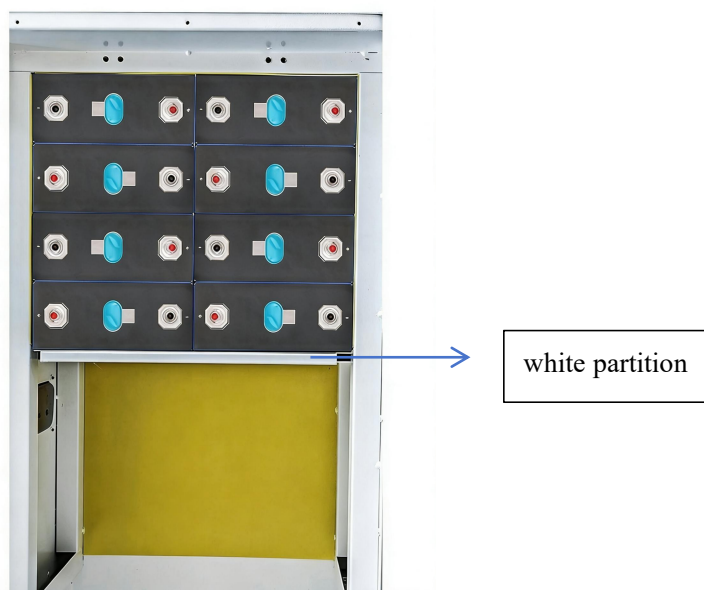
2. As shown in the figure, lay epoxy boards inside the box and EVA foam between the two battery cells



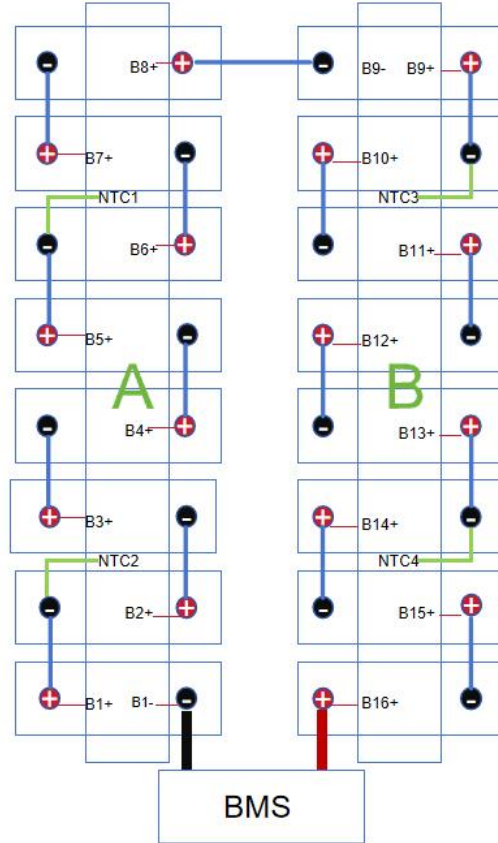
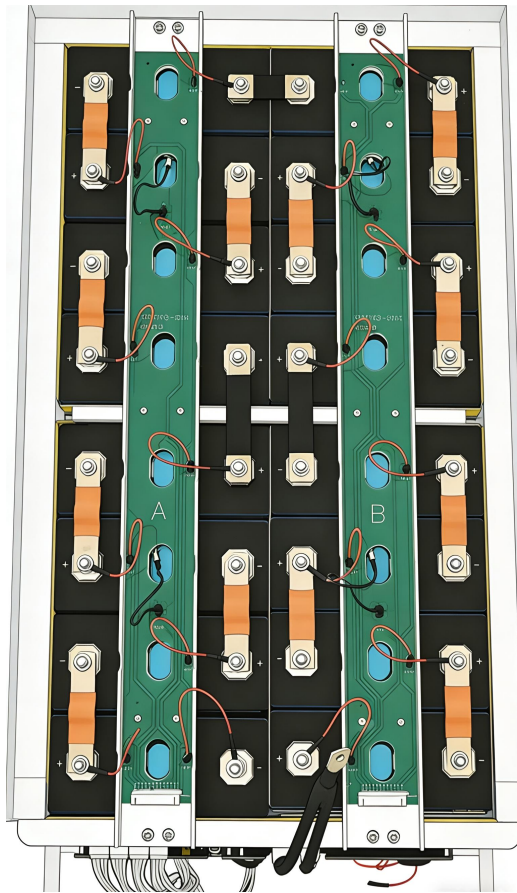
Main Part



3. A white partition is placed in the middle to prevent the battery at the bottom from being subjected to excessive pressure.

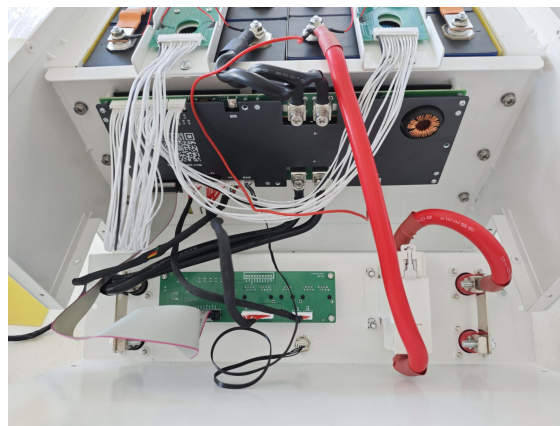
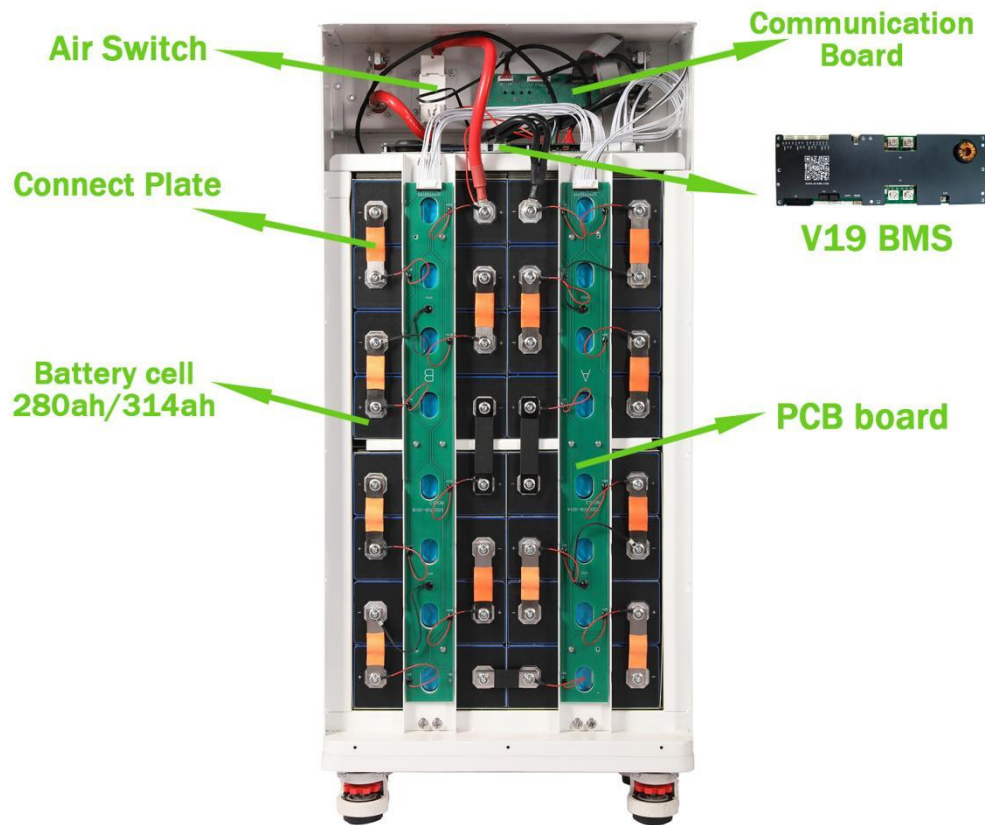


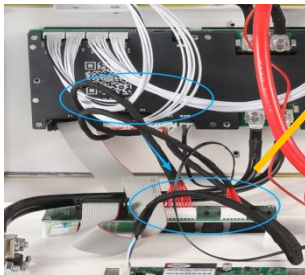
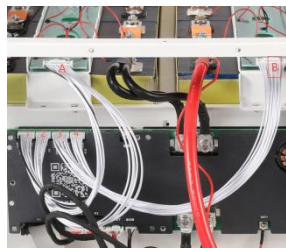
4. Place the batteries correctly according to the diagram on the right (incorrect placement will cause a short circuit); Connect the busbar; Connect the PCB board.



5.First, install the BMS and connect it to the PCB board. Then connect the BMS to the communication board and the display screen. Finally, connect the battery's positive and negative terminals.

Internal Condition of Battery Pack





Connect the data acquisition cable

communication board

Connect the BMS to the communication board

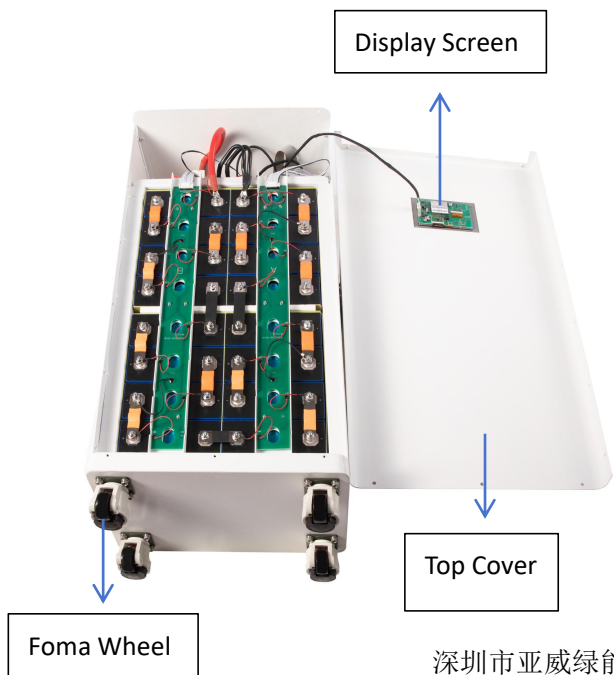
negative terminal

positive terminal

The negative terminal has two cables: B1- and the black cable.

The positive terminal has three cables: B16+, BAT+, and the red cable.

6. Install to display screen, the top cover, and Foma Wheel



7.Mobile APP matching the product can be obtained by scanning the QR code shown in Figure .
Android Version 7 minimum is required for the Android APP.



手机APP 链接二维码
Mobile APP link QR code



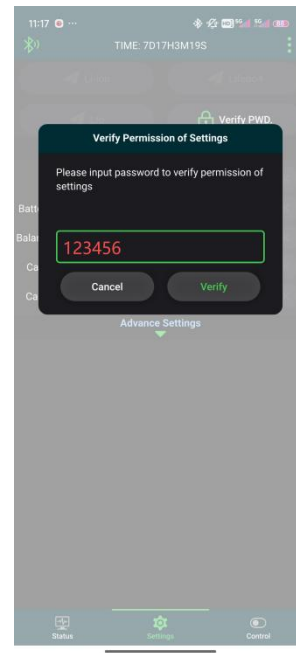
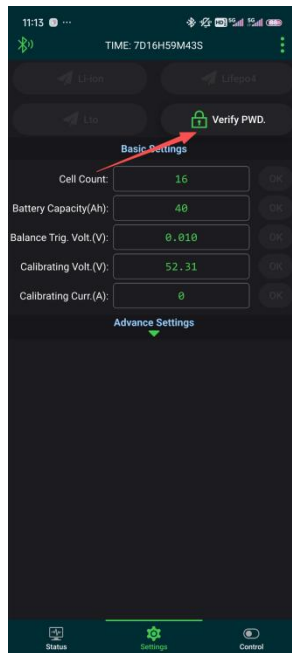
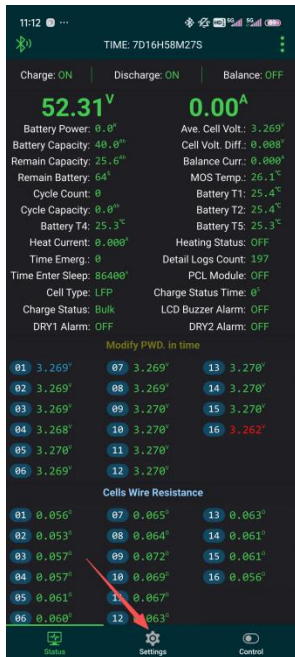
极空BMS
适用于 Android 设备

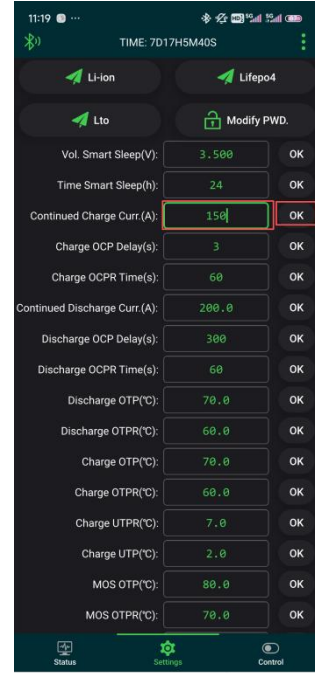
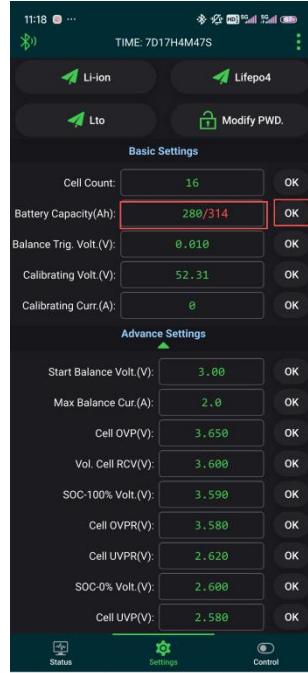
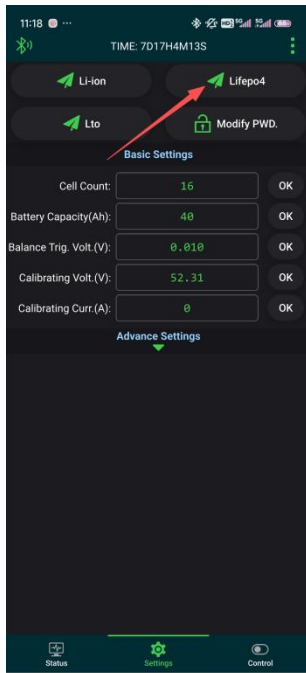
8. APP Bluetooth Application

8.1 Connect to the Bluetooth APP (The Bluetooth pairing password is 1234).

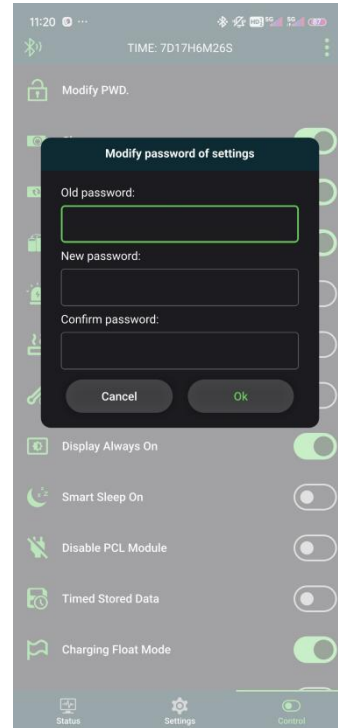
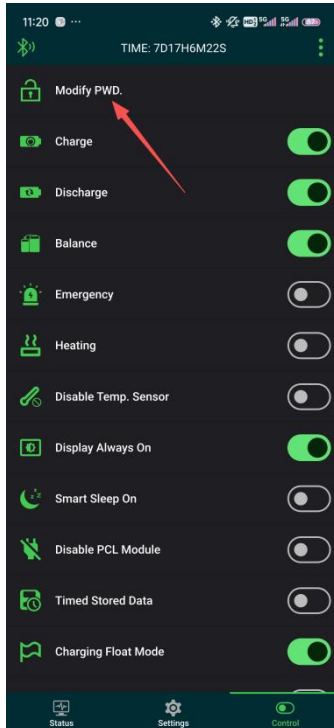
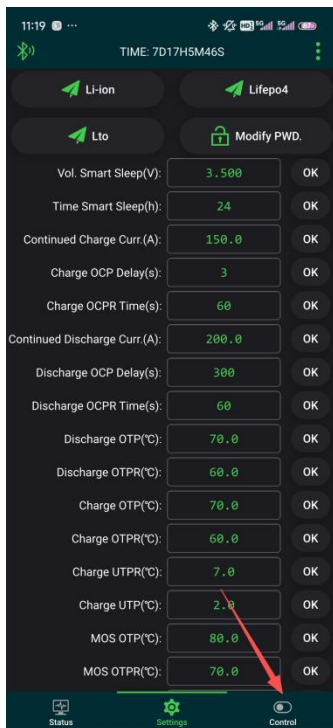


8.2 Set the parameters (The authorization setting password is 123456).





8.3 Change the password (old password: 123456)



9. Inverter models supported

Communication compatible list:

Note: These are the mainstream inverters that JK BMS can be compatible with, for other inverters to be compatible, please provide the brand name and communication protocol so that we can confirm for you.

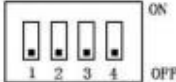
Extreme Space BMS-PB Series Communication Protocol Inverter List Summary (CAN)						
Inverter brand		Protocol name	Communication interface	Real machine debugging	Matching model	Protocol in inverter code
德业 Deye		低压储能CAN通信协议V1.0 Low-voltage hybrid inverter CAN communication protocol V1.0	CANBUS-500K	yes	SUN-5K-SG03LP1-EU	1. Battery Setup Menu->Lithium 2. Advanced Function->BMS_Err_Stop
派能 PYLON		派能CAN总线协议V1.2 PYLON CANBUS Protocol V1.2	CANBUS-500K	NO		
		派能低压RS485通信协议V3.5 PYLON low voltage RS485 Protocol V3.5	RS485-9600-115200			
古瑞瓦特 Growatt		古瑞瓦特低压CAN总线协议V1.08 Growatt BMS CAN-Bus-protocol -low-voltage_V1.08	CANBUS-500K	yes	SPF 3000TL HVM-48	1. Set LI in 05 2. If the value is set to 1 in 36, CAN communication is enabled
		储能机与电池PACK之间RS485通讯协议V2.01 Growatt xxSxxP ESS Protocol V2.01	RS485-9600	YES	SPF 3000TL HVM-48	1. Set LI in 05 2. If the value is set to 51 in 36, CAN communication is enabled
维克多 Victron		维克多CAN总线协议201707 CAB-BUS_BMS_Protocol_201707	CANBUS-500K	YES	Cerbo GX	
英威腾 Invent		英威腾户用储能逆变器低压版BMS通信协议(V00) INVT BMS CAN Bus protocol V00	CANBUS-500K	YES	BD5KTL-RL1	
固德威 GoodWe		固德威低压CAN总线协议V1.7(ES/EM/S-BP/BP系列) GoodWe LV BMS Protocol (CAN) V1.7(For ES/EM/S-BP/BP Series)	CANBUS-500K	YES	GW5000-ES-20	For battery type, select GoodWe->SECU-A5.4L*1
SMA		SMA电池与逆变器通信协议V1.0 FSS-ConnectingBat-TI-en-10 Version 1.0	CANBUS-500K	NO		
日月元 Voltronic		日月元逆变器与BMS RS485通信协议20200325 Voltronic Power Inverter and BMS 485 communication protocol 20200325	RS485-9600	NO		
硕日 SRNE		硕日Modbus通信协议 PACE BMS Modbus Protocol for RS485 V1.3	RS485-9600	YES	HF2430S60-100	1. Set 39 to BMS 2. Set 32 to BMS 3. Set 33 to WOW
美世乐 MUST		美世乐PV1800F-系列CAN通信协议1.04.04 MUST PV1800F-CAN communication Protocol1.04.04	CANBUS-100K	YES		
迈格瑞能 MEGAREVO		迈格瑞能混合逆变器CAN通信协议	CANBUS-500K	YES		
		MEGAREVO_Hybrid_BMSCAN_Protocol				
鹏城 Luxpowertek		鹏城CAN通信协议V01	CANBUS-500K	YES		
		Luxpowertek Battery CAN Protocol Vo1				

10. Battery parallel configuration

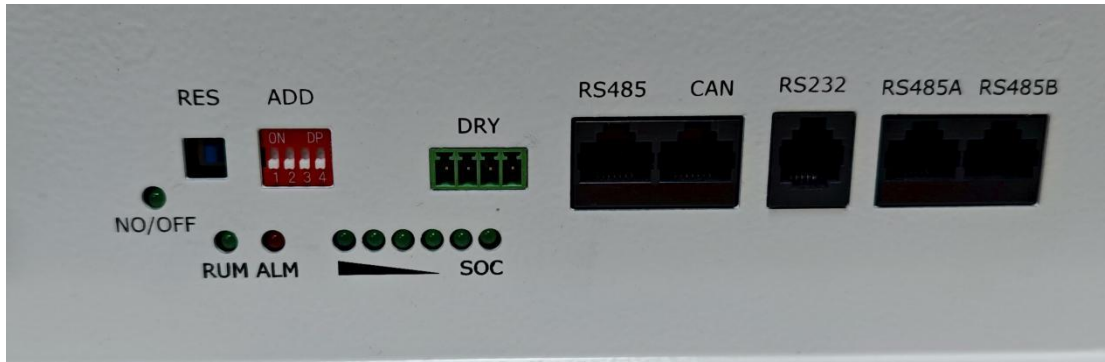
10.1 Set the master and slave devices. The master device is responsible for communicating with the inverter, and the slave device is only used for data synchronization and does not actively communicate. Use the DIP switch to set the master and slave devices of the BMS. **0** is the BMS **master**, and **1→15** are the **slave devices**. The method is as follows:

拨码开关设置
(Dip switch Settings)

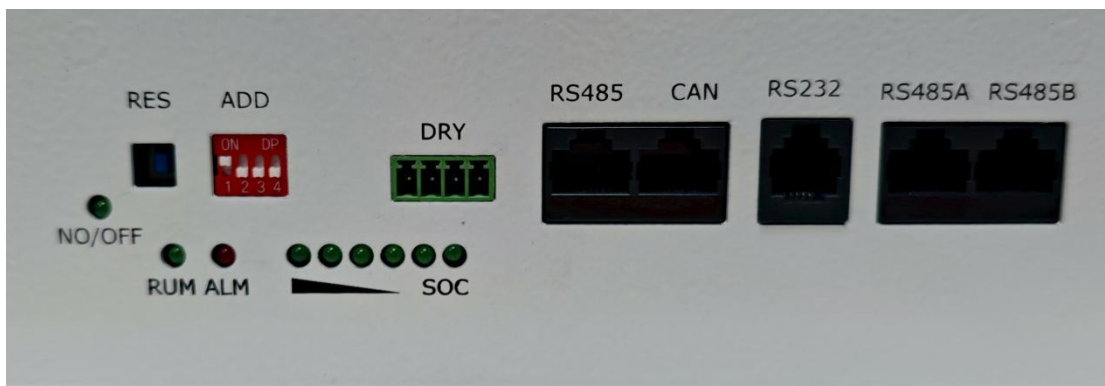
地址(address)	拨码开关位置(Dip switch position)			
	1	2	3	4
0	OFF	OFF	OFF	OFF
1	ON	OFF	OFF	OFF
2	OFF	ON	OFF	OFF
3	ON	ON	OFF	OFF
4	OFF	OFF	ON	OFF
5	ON	OFF	ON	OFF
6	OFF	ON	ON	OFF
7	ON	ON	ON	OFF
8	OFF	OFF	OFF	ON
9	ON	OFF	OFF	ON
10	OFF	ON	OFF	ON
11	ON	ON	OFF	ON
12	OFF	OFF	ON	ON
13	ON	OFF	ON	ON
14	OFF	ON	ON	ON
15	ON	ON	ON	ON



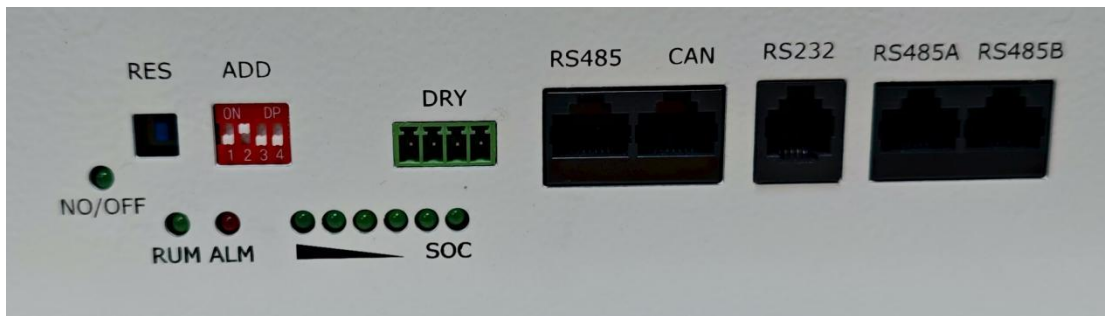
主机地址 0 设置示例(Example of Host Address 0 Setting)



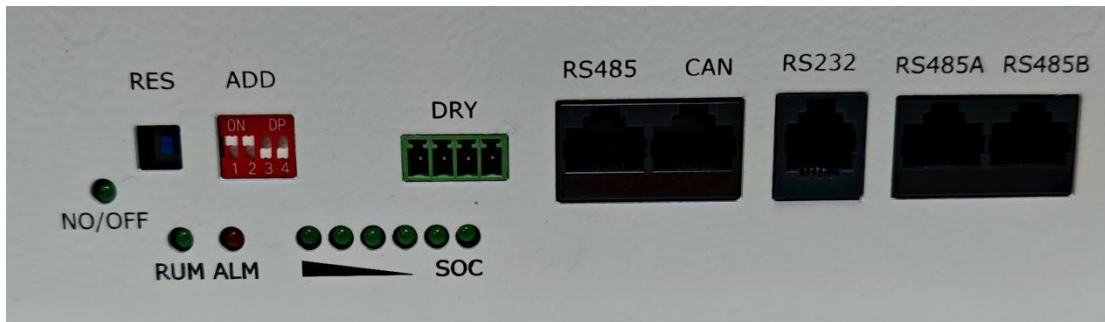
从机地址 1 设置示例(Example of Setting Slave Address 1)



从机地址 2 设置示例(Example of Setting Slave Address 2)



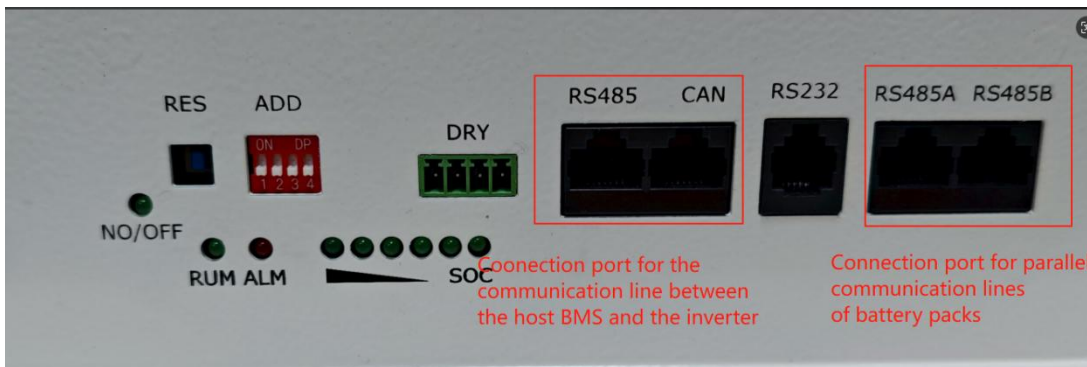
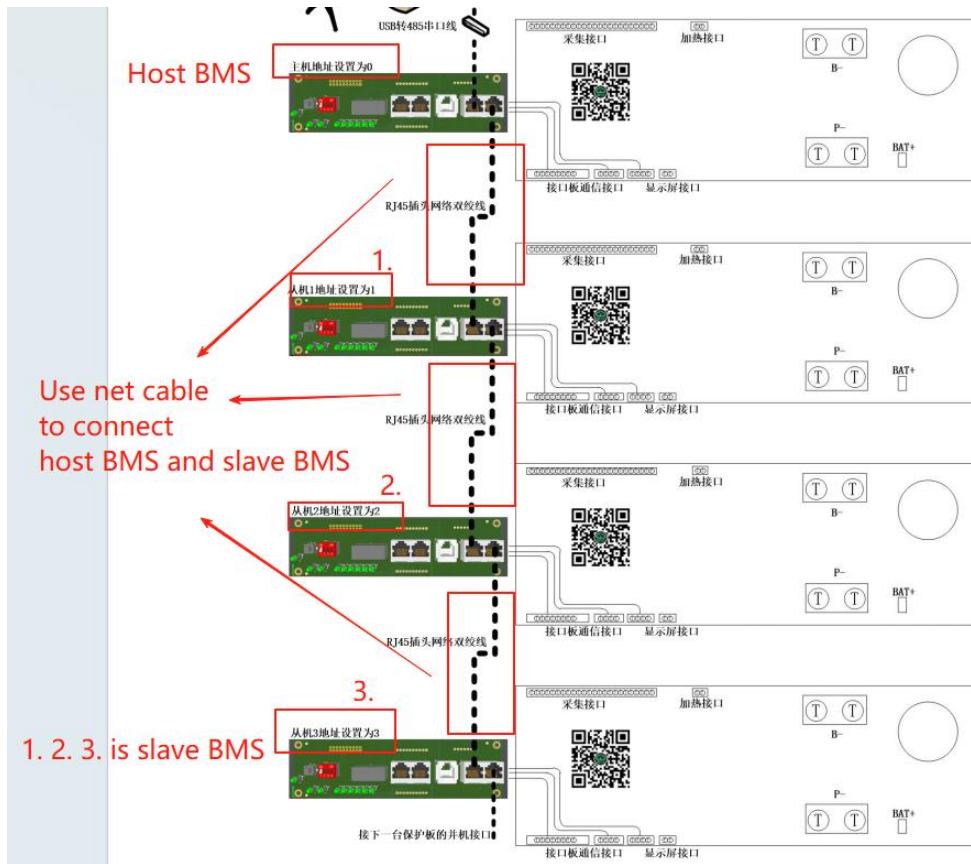
从机地址 3 设置示例(Example of Setting Slave Address 3)



..... Slave Address 15.....

10.2 用 RS485 网线连接主机电池组和从机电池组

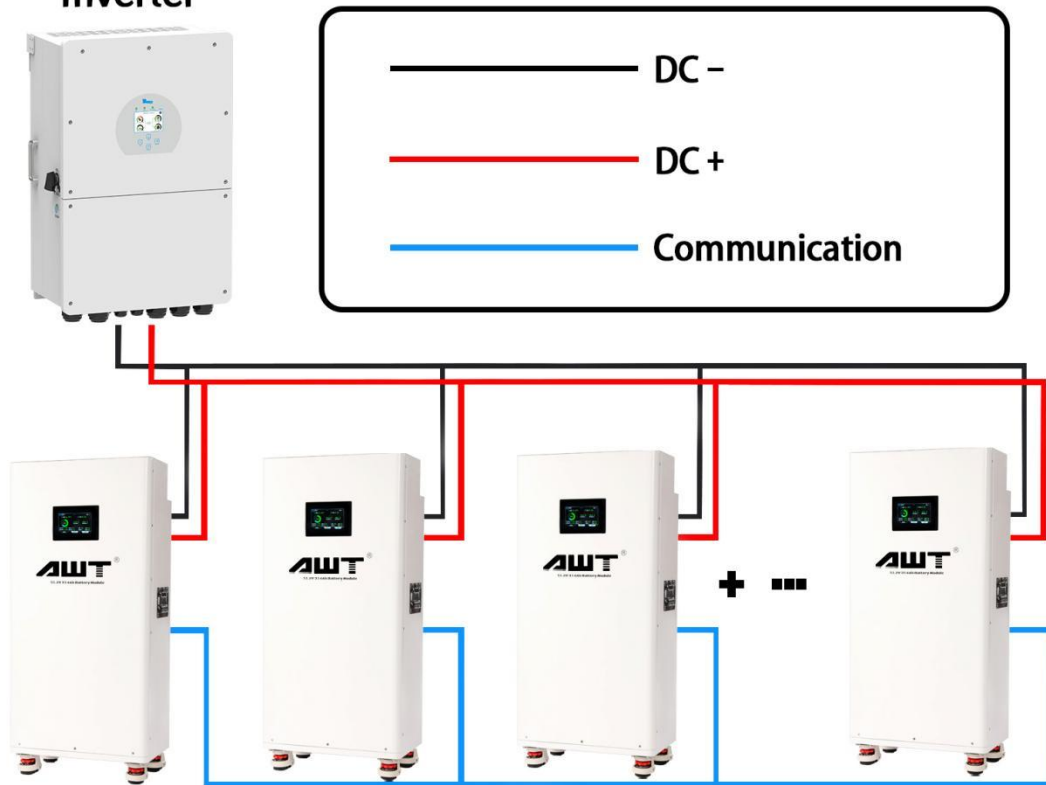
Use RS485 network cable to connect the host battery pack and the slave battery pack



SUPPORT 16 UNITS IN PARALLEL

The number of parallel connections can be customized

Inverter



Contact Us

Tel:

Email:

Website: <https://aweiteenergy.en.alibaba.com/>

Corporation: Csawait Energy Technology Co., Ltd

Address: B923 Tianhui Building East Circle and Yousong Road Intersection, Longhua

New area, Shenzhen,China



Home & Industry Energy Storage System

Safe, Reliable, and Eco-Friendly :
Your Perfect Home Energy Storage Solution!

- Stackable, Rack-mounted, and Wall-mounted Styles
- Various Capacities Available
- Supports Max 16 Units in Parallel
- Compatible with All Mainstream Hybrid Inverters

VIEW MORE +

The advertisement features a background image of a large industrial building with solar panels on the roof. In the foreground, several energy storage units are displayed, including a stack of five white units on wheels, a single white unit, and a black unit. To the right, there is a large grey metal cabinet with two doors and ventilation fans.